



HARPERScientific®

PRODUCT GUIDE
2021

Legendary Innovation & Solutions



TABLE OF CONTENTS

HARPERScientific® PRODUCT GUIDE

CLEANERS.....	1
SPONGES & RAGS.....	5
SCRUB BRUSHES.....	6
BORE BRUSHES.....	7
POULSONATOR.....	8
ANILOX ROLL COVERS	9
ANILOX ROLL STORAGE.....	10
INSPECTION & REPAIR TOOLS.....	11
INK MANAGEMENT TOOLS.....	12
QD™ PROOFER PRINTER.....	13
QD™ PROOFER SYSTEMS.....	14
QD™ PROOFER SYSTEM ACCESSORIES.....	15
QD™ PROOFER TABLES.....	16
PROOFER HANDLES & PRINTHEADS.....	17
PROOFER ROLLS.....	18
PROOFER ACCESSORIES.....	19
QD PROOFER PARTS.....	20
PHANTOM PROOFER PARTS.....	21
ECHOCEL JR PROOFER PARTS.....	22



CLEANERS

ALUMINUM SAFE


CERAM CLEAN II*

Ceram Clean II™ is our best selling, innovative cleaner that is specially formulated to effectively and efficiently remove dried water-based, UV, and solvent-based inks from the cells in your anilox without damaging the cell structure on ceramic, chrome, or gravure anilox rolls. It is available in three consistencies to meet the needs of your application; Original, Paste, and Pourable. The Original has the highest viscosity while the Pourable version has the lowest viscosity. All varieties are ready to use and have identical cleaning power!



* Sold by weight, not by volume.

2 PACK - 16 oz BOTTLES

ORIGINAL	PASTE	POURABLE
Part #50001.200	Part #50000.800	Part #50000.200

8 PACK - 16 oz BOTTLES


ORIGINAL	PASTE	POURABLE
Part #50001.300	Part #50000.900	Part #50000.300

5 GALLON CONTAINER

ORIGINAL	PASTE	POURABLE
Part #50001.600	Part #50000.400	Part #50000.600

55 GALLON CONTAINER

ORIGINAL	PASTE	POURABLE
Part #50001.500	Part #50000.700	Part #50000.500

ALUMINUM SAFE


MULTI-PURPOSE MASTER MIX

Combine this powder mixture with water to clean water-based inks on: anilox rolls, rubber rolls, printing plates, ink pumps, ink pans, ink hoses, doctor blade chambers, press frames, press room floors and deck flushing systems. Available in convenient, pre-measured 2 oz packets and value sized containers.

MIXING DIRECTIONS: Mix 1 scoop/1 packet with 5 gallons of water for general cleaning and flushing. For cleaning plates, mix 1 scoop/1 packet per quart of water.

11 PACK - 2 oz PACKETS

Part #53000.400

22 PACK - 2 oz PACKETS

Part #53000.500

44 PACK - 2 oz PACKETS

Part #53000.600

5 GALLON CONTAINER

Part #53000.200

55 GALLON CONTAINER

Part #53000.300



INK REMOVAL KEY


 WATER UV SOLVENT

CLEANERS

Excellent on Press & Ready to Use



ANILOX SURFACE CLEANER

ALUMINUM SAFE


Anilox Surface Cleaner™ is a ready-to-use cleaner that is specifically formulated to remove surface stains and residue blemishes from the surface of ceramic anilox. The proprietary emulsifier helps to break down and loosen surface stains including water and ink marks, surface line blemishes and coating residue. It is especially effective on coatings containing silicone and on stains left behind from secondary cleaning systems. It can also be used on press components and accessories. Try it with our exclusive X-Cel Multi-Purpose Cleaning Pad™ to boost your cleaning power!

4 PACK - 32 oz BOTTLES

Part #60000.200

5 GALLON CONTAINER

Part #60000.400

12 PACK - 32 oz BOTTLES

55 GALLON CONTAINER



CERAM CLEAN SOLV-IT

ALUMINUM SAFE


Ceram Clean Solv-it™ is a real marvel for the ink, adhesive, and coating user! It's incredibly quick and easy to use, taking the chore out of cleaning. It is not only excellent for plasticizer removal involving central impression draws and impression rolls, it has gentle corrosion inhibitors that prevent rusting, has a pleasant citrus scent, does not contain any petroleum distillates and is biodegradable too! Boost your cleaning power with our exclusive X-Cel Multi-Purpose Cleaning Pad™!

4 PACK - 32 oz BOTTLES

Part #51000.200

5 GALLON CONTAINER

Part #51000.400

12 PACK - 32 oz BOTTLES

Part #51000.300

55 GALLON CONTAINER

Part #51000.500



INK RE-LEEZ

ALUMINUM SAFE


Ink Re-Leez™ is formulated for cleaning UV, solvent and water-based inks on presses, anilox rolls, and general cleaning. The cleaner's advanced surfactant technology is environmentally friendly, using no petroleum distillates or hazardous chemicals. It is biodegradable, has a low vapor pressure and is a low V.O.C. cleaner.

4 PACK - 32 oz BOTTLES

Part #56000.200

5 GALLON CONTAINER

Part #56000.400

12 PACK - 32 oz BOTTLES

Part #56000.300

55 GALLON CONTAINER

Part #56000.500

CLEANERS

Excellent for On-Press & Machine Cleaning Systems

ALUMINUM SAFE



ALTRAWASH CLEAN



Altrawash Clean™ is an environmentally-friendly, ready to use cleaner specifically designed for removing water-based, UV and solvent inks, that is safe and effective in pressure washing systems, soak tanks, ultrasonic tanks and/or as an “on-press” anilox roll cleaner. It has an advanced surfactant technology that is exceedingly friendly to the environment. It is biodegradable, has a low vapor pressure, and is V.O.C. free!

MIXING DIRECTIONS: Use at full strength and keep wet and irrigated for at least 1-2 minutes. May be applied with a sprayer, brush, X-Cel Multi-Purpose Cleaning Pad™ or an Ultimate Lint-Free Rag™.

1 GALLON CONTAINER

Part #57100.001

30 GALLON CONTAINER

Part #57100.006

5 GALLON CONTAINER

Part #57100.002

55 GALLON CONTAINER

Part #57100.007



ALUMINUM SAFE



ALTRAWASH GREEN

AltraWash Green™ is a concentrated cleaner specifically formulated for removing water-based inks, that is safe and effective in pressure washing systems, soak tanks, ultrasonic tanks and as an “on-press” anilox roll cleaner. It does not contain petroleum distillates or environmentally hazardous chemicals and is biodegradable.

MIXING DIRECTIONS: Dilute 1 part of AltraWash Green™ to 3 parts of water for ultrasonic tanks; 1:4 for pressure washing systems and soak tanks; 1:10 for ink system flushing; and 1:5 for on press cleaning. May be applied with a sprayer, brush, X-Cel Multi-Purpose Cleaning Pad™ or an Ultimate Lint-Free Rag™.



1 GALLON CONTAINER

Part #57000.001

30 GALLON CONTAINER

Part #57000.003

5 GALLON CONTAINER

Part #57000.002

55 GALLON CONTAINER

Part #57000.004

275 GALLON CONTAINER

Part #57000.005

CLEANERS

Excellent for On-Press & Machine Cleaning Systems

ALUMINUM SAFE


PERFORMANCE WASH

Performance Wash™ is a fast-acting, low-foam, highly alkaline-based anilox roll cleaner. It is suitable for use in removing water-based, UV and solvent inks. It is engineered to clean through multiple layers of ink to the bottom of the cells. It can be used in automatic roll cleaning machines and ultrasonic machines with rinse cycles. The unique formula requires less heat than conventional products and is active at room temperature.



MIXING DIRECTIONS: Dilute 1 part Performance Wash™ to 1 part of water for automatic roll cleaning machines; and 1:10 for Ultrasonic tanks and manual cleaning.

1 GALLON CONTAINER

Part #60200.001

30 GALLON CONTAINER

Part #60400.003

5 GALLON CONTAINER

Part #60300.002

55 GALLON CONTAINER

Part #60500.004

275 GALLON CONTAINER

Part #60600.005

ALUMINUM SAFE


ALTRAWASH BLUE

AltraWash Blue™ is a concentrated cleaner specifically formulated for removing solvent and UV inks, that is safe and effective in washing systems, soak tanks, ultrasonic tanks and as an “on-press” anilox roll cleaner. It does not contain petroleum distillates or environmentally hazardous chemicals and is biodegradable.



MIXING DIRECTIONS: Dilute 1 part of AltraWash Blue™ to 3 parts of water for ultrasonic tanks, 1:4 for pressure washing systems, 1:4 for soak tanks, 1:10 for ink system flushing; and 1:5 for on press cleaning. May be applied with a sprayer, brush, X-Cel Multi-Purpose Cleaning Pad™ or an Ultimate Lint-Free Rag™.

1 GALLON CONTAINER

Part #58000.001

30 GALLON CONTAINER

Part #58000.003

5 GALLON CONTAINER

Part #58000.002

55 GALLON CONTAINER

Part #58000.004

SPONGES & RAGS

X-CEL MULTI-PURPOSE CLEANING PAD™



The X-Cel Multi-Purpose Cleaning Pad™ has a revolutionary molecular structure that boosts your cleaning power and removes stains, dirt, grime, inks, coatings and so much more without the use of harsh chemicals or detergents. It can be applied to many different applications throughout your home, office, and workshop and complements our cleaners!

It is the best development in anilox cleaning applicators since the stainless steel brush! The unique design boosts the cleaning power of your cleaner and breaks down the layers of inks and coatings with each wipe. It even removes surface stains and blemishes with ease!

6 PACK

Part #68000.300

DIGI-TEK HYDRO SPONGE™



These sponges are ideal for cleaning delicate digital plates. This solvent resistant sponge can be used in conjunction with our cleaners to clean plates without snagging the dots and is also excellent for scrubbing anilox surfaces.

48 PACK

Part #67000.300

ULTIMATE LINT-FREE CLEANING RAG™



Guaranteed lint-free and sold by the pound. These rags are great for lint-free clean up of plates, rolls, chamber systems, electronics, and so much more!

25 LB BOX

Part #63000.000

50 LB BOX

Part #63000.100

100 LB BOX

Part #63000.200

SCRUB BRUSHES

A high quality scrub brush is the most cost effective maintenance tool your press operator can have to prevent wasted time struggling to achieve color from a dirty roll and reduce overall cleaning time!

BRASS & STAINLESS STEEL BRUSHES

Designed for Anilox Rolls

These brushes have bristles that are specially designed and engineered to be able penetrate the bottom of the anilox cells for a deep clean. The duro brushes are designed with taper and have plastic handles that resist the impact of water and chemicals, extending the life of the brush. Duro brushes are ideal for environments where organic materials are not allowed.

STAINLESS STEEL FOR CERAMIC ROLLS

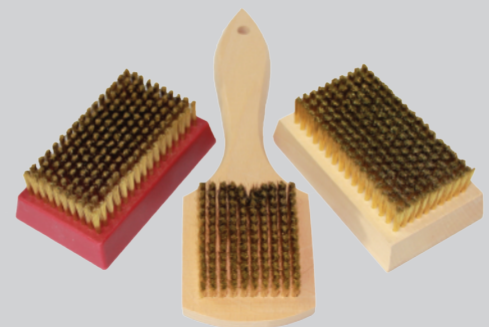
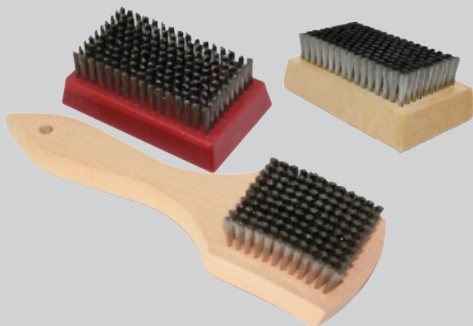
STAINLESS STEEL DURO BRUSH

Part #43020.000

STAINLESS STEEL WOODEN BRUSH

No Handle: Part #43000.000

w/ Handle: Part #43100.000



BRASS FOR CHROME ROLLS

BRASS DURO BRUSH

Part #40010.000

BRASS WOODEN BRUSH

No Handle: Part #40000.000

w/ Handle: Part #40100.000

HORSEHAIR & NYLON BRUSHES

Designed for Printing Plates

Specially formulated bristles designed to clean printing plates without the worry of damage. Bristles have low water absorption and excellent bristle recovery.

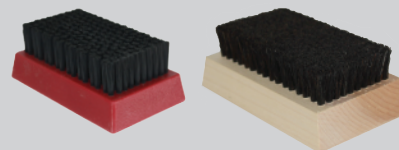
HORSEHAIR DURO BRUSH

No Handle: Part #43040.000

HORSEHAIR WOODEN BRUSH

No Handle: Part #41000.000

w/ Handle: Part #41100.000



NYLON DURO BRUSH

Part #42030.000

NYLON WOODEN BRUSH

Part #42000.000

These brushes are NOT intended for use with digital plates. Please see the Digi-Tek™ Sponge for digital plates.

SLEEVE BORE BRUSHES

EZ-BORE™ BRUSH

Prevent damage by keeping your anilox sleeve bores clean! The EZ-Bore™ Brush comes with an aluminum anodized handle with a special grip, a bore brush, and a set of foam disks that allow for the easy cleaning of bores to prevent sliding friction, unwanted buildup that affect sizes and print quality, and fosters easy mounting and demounting from print stations on the press. Have multiple size bores or need replacement parts? Additional bore brushes and foam disks are available!



EZ-BORE BRUSH w/ 36" HANDLE

3" TO 3.5"
Part #45001.000

4" TO 4.5"
Part #45003.000

3.5" TO 4"
Part #45002.000

4" TO 4.5"
Part #45004.000

EZ-BORE BRUSH w/ 72" HANDLE

4.5" TO 5"
Part #45005.000

5.75" TO 6.5"
Part #45008.000

5" TO 5.5"
Part #45006.000

6.5" TO 7"
Part #45009.000

5.5" TO 5.75"
Part #45007.000

7" TO 7.5"
Part #45010.000

7.5" TO 8"
Part #45011.000

BORE BRUSH



4" CODE BA
Part #45000.001

6" CODE BC
Part #45000.003

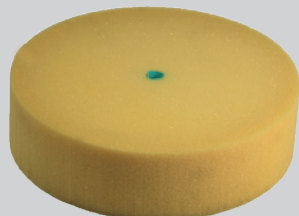
7" CODE BD
Part #45000.004

5" CODE BB
Part #45000.002

6" POLY BRUSH
Part #45000.024

7" CODE BE
Part #45000.005

OPEN CELL FOAM DISK



3.5" X 2" CODE FA
Part #45000.006

5.5" X 2" CODE FD
Part #45000.009

7" X 2" CODE FG
Part #45000.012

4.5" X 2" CODE FB
Part #45000.007

6" X 2" CODE FE
Part #45000.010

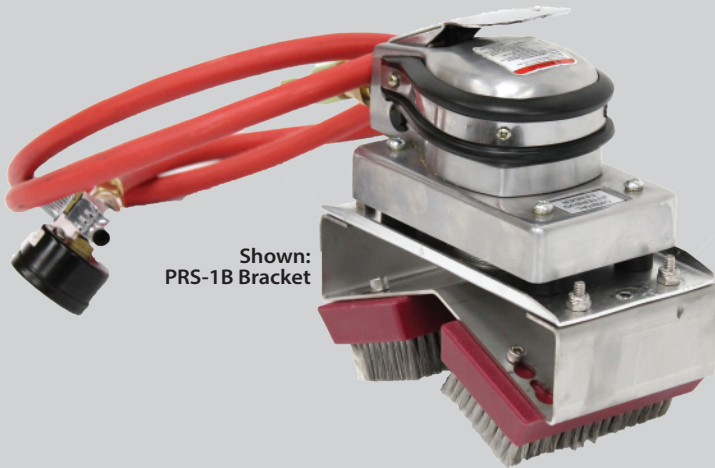
7.5" X 2" CODE FH
Part #45000.013

5" X 2" CODE FC
Part #45000.008

6.5" X 2" CODE FF
Part #45000.011

8" X 2" CODE FI
Part #45000.014

POULSONATOR



Shown:
PRS-1B Bracket

The Poulsonator™ is a dual brush scrubber that is air operated at 40 psi to take elbow grease out of the equation and reduce anilox cleaning time by up to 70 percent! The start lever is designed to fit into the palm of your hand as you move the scrubber across the roll. The Poulsonator™ comes with an air regulator that is preset and ready to use. There are two different bracket options that will allow you to clean small rolls up to 8 inches (inner brush slots for 0-5" and outer slots for 5-8") and larger rolls 8-12 inches in diameter. Available with your choice of stainless steel or brass brushes. Don't forget an extra set of brushes!

Recommended Cleaner: **Ceram Clean II™**



8"-12" ROLLS

Bracket PRS-1A & Choice of:

BRASS DURO BRUSHES

Part #44010.800

STAINLESS STEEL DURO-BRUSHES

Part #44010.600

BRASS WOODEN BRUSHES

Part #44010.400

STAINLESS STEEL WOODEN BRUSHES

Part #44010.300

0- 8" ROLLS

Bracket PRS-1B & Choice of:

BRASS DURO BRUSHES

Part #44010.700

STAINLESS STEEL DURO BRUSHES

Part #44010.500

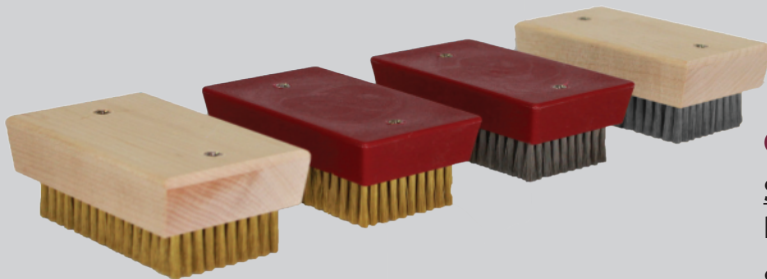
BRASS WOODEN BRUSHES

Part #44010.100

STAINLESS STEEL WOODEN BRUSHES

Part #44010.200

REPLACEMENT BRUSHES



CHROME ROLLS

BRASS DURO BRUSH

Part #44010.104

BRASS WOODEN BRUSH

Part #44010.102

CERAMIC ROLLS

SS DURO BRUSH

Part #44010.204

SS WOODEN BRUSH

Part #44010.202

REPLACEMENT BRACKET

Bracket for mounting the Poulsonator™ brushes to the scrubber.

PRS-1A BRACKET

Part #44010.001

PRS-1B BRACKET

Part #44010.002



Shown:
PRS-1B Bracket

ANILOX ROLL COVERS

★ Damage Prevention

ECHO™ ROLL COVERS*

These covers will reduce downtime by keeping your rolls clean, safe from nicks and scratches, and ready for immediate changeovers. Echo Roll Covers™ are constructed with durable vinyl and inner-lined with industrial grade felt padding. The Echo-Pro™ Roll Covers offer additional padding to better protect the anilox. All covers have Velcro closures for easy installation and a clear identification pocket for easy inventory management.



ECHO-COVER™

W/ EDGE PROTECTION

Part #70200.010

W/OUT EDGE PROTECTION

Part #70200.020

ECHO-PRO™ (PADDED)

W/ EDGE PROTECTION

Part #70100.010

W/OUT EDGE PROTECTION

Part #70100.020

SHIELD-PRO™ COVERS*

Shield-Pro™ Roll Covers help prevent damage to anilox rolls, cylinders, plate-mounted sleeves, etc., are easy to clean, and solvent resistant. Available in any length for diameters 2.5 to 12 inches. For UV ink environments, we recommend the UV Shield-Pro™ Covers that were specially designed help prevent ink curing.

Shield-Pro™ Slit Covers are designed for rollers and sleeves where installation on the press is required to prevent damage to anilox rolls, cylinders, mandrels, plate-mounted sleeves, etc. They can be applied to rolls without removal from press.

Shield-Pro™ Un-Slit Covers are designed to be installed from the end of a sleeve when it is in service configuration for removal and or changing. Un-slit covers are available with bump rings for added protection.

UV COVERS

SLIT UV COVER

Part #70400.000

UN-SLIT UV COVER

Part #70400.100

UN-SLIT UV w/ BUMP RING

Part #70400.200



UV SLIT



UV UN-SLIT
w/ BUMP RING

CLEAR COVERS

SLIT CLEAR COVER

Part #70300.000

UN-SLIT CLEAR COVER

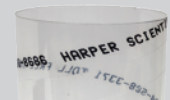
Part #70300.100

UN-SLIT CLR w/ BUMP RING

Part #70300.200



CLEAR SLIT



CLEAR UN-SLIT

ANILOX ROLL STORAGE

★ Damage Prevention



SLEEVE WRAK™

The number of sleeves you can store may vary from 12 to 20 depending on the sleeve's diameter. Racks come powder coated and include padded decks and 5" non-sparking casters.

Part #72100.000



MULTI-TIER SLEEVE WRAK™

The number of sleeves you can store per row on each layer may vary from 12 to 20 depending on the sleeve's diameter. Racks come powder coated and include padded decks and 5" non-sparking casters.

DOUBLE DECKER

Part #72100.200



PLATE CYLINDER WRAK™

This rack utilizes the space between the bearer and cylinder and opposite bearer and gear to support these cylinders horizontally. Racks come powder coated and include padded decks and 5" non-sparking casters.

Part #71104.000



2-SIDED A-FRAME ROLL MASTER™

The A-Frame model allows the press operator to quickly find the right anilox for the job. It comes equipped with heavy duty casters, handles on both ends, and safety hooks.

SMALL (UP TO 20" FACE LENGTH)

Part #71101.000

MEDIUM (21" - 32" FACE LENGTH)

Part #71102.000

LARGE (33" - 48" FACE LENGTH)

Part #71103.000



4-SIDED ROLL MASTER™

This 4-sided rolling rack is stable and easy of use. It comes equipped with heavy duty casters, handles on all sides to allow pulling from any direction, and safety hooks.

SMALL (12" - 24" FACE LENGTH)

Part #71001.000

LARGE (25" - 45" FACE LENGTH)

Part #71004.000

QD™ PRINTER INK PROOFING SYSTEM

The Ultimate Lab Environment Printer!



The QD™ Printer is the ideal multi-process printer that meets most international requirements and standards and is suitable for use with flexible or rigid substrates, testing color, images, coating coverage and functional inks. Its modular design allows the mixing and matching of different components for you to customize to your specific project's needs. The variable speed setting lets you adjust the table speed, which allows for quicker drying ink. Plus the adjustable carriage allows for multi-hit testing, letting you leave the proof on the table. The QD™ Proofer's are specifically designed to be used with the QD™ Printer and Proofer Tables, providing a ultimate and best proofing system available! QD™ Proofer, Proofer Table, and anilox rolls are sold separately.

FEATURES & SPECIFICATIONS

- Enclosed System
- Modular, Heavy Duty Design
- Digital Display
- Programmable Travel Speeds & Length
- Adjustable Stroke from 12 - 33 inches / 30.5 - 84 cm
- Adjustable Speed from 5 - 150 feet/minute
- Units Of Measure: Imperial or Metric
- Two Modes: Print Mode & Cycle Mode
- Adjustable Mechanical Nip Pressure
- Unwind Stand Included
- Universal Power Supply (85-265v, 50 or 60hz)

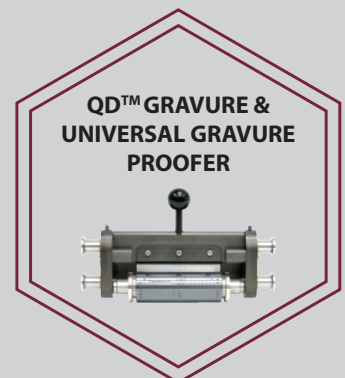
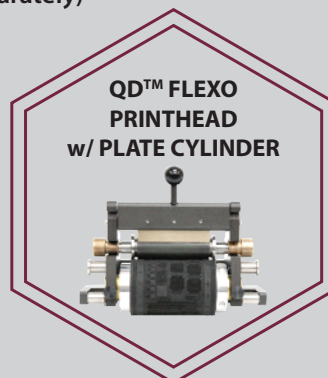
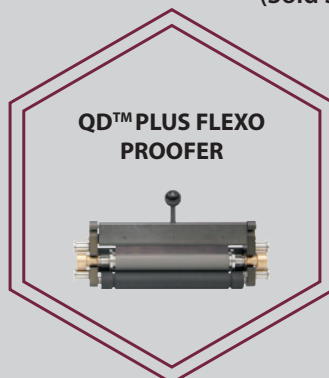
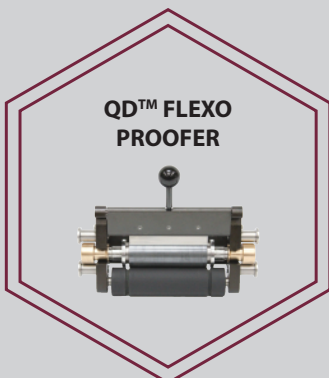
SIZES AVAILABLE

STANDARD (2.5" PRINT WIDTH)
Part #83600.245

PLUS (4.5" PRINT WIDTH)
Part #83600.225



COMPATIBLE QD™ PROOFERS & PRINTHEADS (Sold Separately)



INSPECTION & REPAIR TOOLS

LAB-IN-A-BOX



Proactively manage your anilox inventory and avoid the downtime with the Lab-in-a-Box! This quick and easy to use kit is all you need to take accurate impressions on your anilox rolls with our specially designed Echocheks.™ Our expert technicians use these Echocheks™ to perform detailed evaluations on your rolls using Harper's Echotopography™ measurement system. These evaluations are done within a controlled lab environment allowing the most accurate analysis possible. Once your Echocheks™ have been thoroughly evaluated, you will receive a detailed report so you won't miss a beat!

10 Count
Part #64000.001

50 Count
Part #64000.002

100 Count
Part #64000.003

★ Preventive Maintenance

HANDHELD TRM-C SERIES MICROSCOPE



Monitor the condition of your anilox inventory with this center-lit, hand-held microscope! Get a close view of your anilox's cells to check wear, damage and plugging. Focus is easily adjusted by rotating the eyepiece, and its small, rugged design makes it ideal for field use.

400x MICROSCOPE
Part #68100.000

400x MICROSCOPE w/ 10x Len for 200x Option
Part #68100.001

HANDHELD TRM-C SERIES 10x LENS ONLY
Part #68100.100

★ Preventive Maintenance

CHIPFIX™



ChipFix™ is your must have solution to keep on hand! This high quality putty allows you to repair your chipped anilox rolls in-house to reduce downtime, prevent unwanted score lines, and will SAVE YOU MONEY!

4 oz TUBE
Part #60000.000

INK MANAGEMENT TOOLS

PROFILTER™ STRAINER

The ProFilter™ Strainer traps particles and debris to allow your ink to remain clean, preventing anilox scoring and resulting in optimum print quality. It is available with either a 20 or 40 mesh screen. Enhance your ProFilter™ Strainer by adding a Metal Catch-it Magnet™ (sold separately) to catch metal debris that would otherwise go through the mesh screen.



PROFILTER STRAINER w/ 20 MESH SCREEN

Part #65000.010

PROFILTER STRAINER w/ 40 MESH SCREEN

Part #65000.020



20 Mesh Screen



40 Mesh Screen



ACCESSORIES:

20 MESH REPLACEMENT SCREEN

Part #65000.011

40 MESH REPLACEMENT SCREEN

Part #65000.021

METAL CATCH-IT MAGNET

Part #20200.001

★ Anilox Scoring Prevention

MAGNETS

Prevent cell damage and score lines caused by contaminated ink with these powerful magnets! They are easily retrofitted for installation into your ink filters, ink pan, or ink bucket. The Metal Catch-it Magnet™ is a great addition to the ProFilter Stainer™!



Ink Pan Plug Magnets

CAUTION When placing the Ink Pan Plug Magnet!

Two magnets are required for this application. One magnet goes in the pan and one magnet goes on the outside of the pan to hold the other magnet in place, keeping it from drifting into the anilox.



Metal Catch-It Magnet™

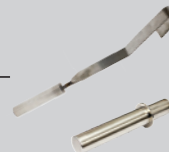
Metal Catch-It Magnet™ Sleeve

INK PAN PLUG MAGNET*

Part #20100.000

METAL CATCH-IT MAGNET

Part #20200.001



MAGNET w/ TANK BRACKET

Part #20200.100

MAGNET w/ SLEEVE

Part #20200.000

METAL CATCH-IT MAGNET SLEEVE

Part #20200.002

★ Anilox Scoring Prevention



pH METER

The ultimate pocket sized pH meter! This handy unit is waterproof and can measure the pH levels and temperature of inks and coatings. The meter measures temperature in °F and °C, pH ranges of 0.0 to 14.0, and calibrates to one or two points.

pH METER

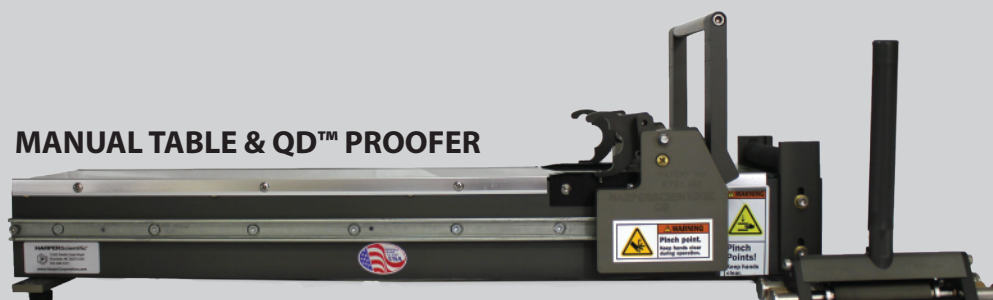
Part #66000.000

QD™ PROOFER SYSTEMS

US PATENT# 8,783,180

Most Versatile Ink Proofing System Available!

Save time, increase efficiency, and reduce waste with a QD™ Proofer System! This system is designed to allow you to take color matching to the press so all you have to do is switch out your anilox rolls according to the proofer color matching and begin your next run! Unlike other proofer systems, the QD™ Proofer System allows you to maintain consistent pressure, without adjustments! The System includes your choice of QD™ Proofer Table and QD™ Proofer. The flexo systems will include one transfer rubber roll. Additional rubber rolls and all anilox rolls are sold separately. Add a QD™ Printer for the ultimate proofing system on the market!

MANUAL TABLE & QD™ PROOFER

MOTORIZED TABLE & QD™ PROOFER


Shown with Substraight Unwind Stand



FLE XO

SHORT MANUAL

Standard (3" Proofer)

Part #83110.001

Plus (5" Proofer)

Part #83119.001

LONG MANUAL

Standard (3" Proofer)

Part #83111.001

Plus (5" Proofer)

Part #83120.001

ELECTRIC

Standard (3" Proofer)

Part #83115.001

Plus (5" Proofer)

Part #83118.001

PNEUMATIC

Standard (3" Proofer)

Part #83115.002

Plus (5" Proofer)

Part #83118.002

SELECT A RUBBER ROLL BASED ON YOUR APPLICATION:

45 Durometer ("Duro") Transfer Roll for Water-Based & Solvent Ink

55 Durometer ("Duro") Transfer Roll for UV Ink

NOTE 45 Duro Transfer Roll will be provided unless otherwise specified when the order is placed.

GRAVURE

SHORT MANUAL

Standard (3" Proofer)

Part #83112.001

Plus (5" Proofer)

Part #83110.100

LONG MANUAL

Standard (3" Proofer)

Part #83113.001

Plus (5" Proofer)

Part #83110.105

ELECTRIC

Standard (3" Proofer)

Part #83110.106

Plus (5" Proofer)

Part #83110.107

STANDARD

2.5" Print Width

PLUS

4.5" Print Width

SHORT TABLES

10.5" Usable Proofer Length

17.5" Stroke Length

LONG & MOTORIZED TABLES

20" Usable Proofer Length

27" Stroke Length

QD™ PROOFER SYSTEM ACCESSORIES

QD™ FLEXO PRINthead CLEANING STAND



The printhead cleaning stand sits over your wash tray and allows you to clean your QD™ Flexo Printhead with ease.



Printhead, plate cylinder, and wash-up tray shown for illustration purposes only.

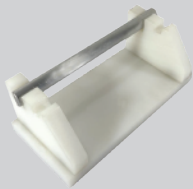
STANDARD (for 3" Printheads)

Part #83600.222

PLUS SIZE (for 5" Printheads)

Part #83600.258

QD™ PLATE CYLINDER MOUNTING STAND



The plate cylinder mounting stand allows you to mount your plates to your QD™ Printhead with ease.

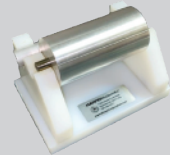


Plate cylinder shown for illustration purposes only.

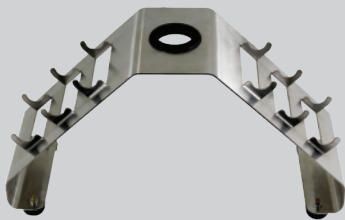
STANDARD (for 3" Printheads)

Part #83119.032

PLUS SIZE (for 5" Printheads)

Part #83119.035

PORTABLE PROOFER STAND



The Portable Proofer Stand allows you to safely store and access proofers in your work area. It's unique design allows you to store your proofer handle on top when it's not in use, keeping your proofing system secure and ready to use on your next job. Available for Standard (3") proofer rolls only.



Proofer & rolls shown for illustration purposes only.

STANDARD (for 3" Proofer Rolls)

Part #82700.000

PROOFER ROLL DESK TRAY



PLATE CYLINDER DESK TRAY



PROOFER ROLL & PLATE CYLINDER DESK TRAY

The Proofer Roll Desk Tray holds 10 proofer rolls and the Plate Cylinder Desk Tray holds 6 plate cylinders, keeping them safe and secure, preventing rolling and damage. Available in two widths, the Standard (3") and Plus (5").



Proofer rolls shown for illustration purposes only.

STANDARD

PLUS SIZE

PROOFER ROLL
Part #82701.000

Part #82702.000

PLATE CYLINDER
Part #83600.221

FLEXO QD™ PROOFER TABLE SPRING KIT



Do you need to adjust the impression of your proofer to get an accurate lay down of your ink or coating? This spring kit provides a variety of springs that allow you to adjust the proofer table's pressure to get the perfect proof! Kit includes two 5, 7, 9, 11, 15, 18, 22, 31, and 36 pound springs.

Part #83119.060

QD™ PROOFER TABLES

US PATENT# 8,783,180

MANUAL PROOFER TABLES

Manual Proofer Tables are available in two lengths, standard and long, and two different widths, standard and plus. The standard width will accommodate HarperScientific's Standard sized proofer and produce a print width of 2.5" (63.5 mm). The plus size width will produce a print width of 4.5" (114.3 mm) and adds an additional three inches to the overall width of the table. Proofers are sold separately. A substrate unwind stand may be purchased and added to the table.

SHORT TABLES

Standard

Part #83000.000

Plus

Part #83002.000

LONG TABLES

Standard

Part #83001.000

Plus

Part # 83003.000

ADDITIONAL ACCESSORIES:

Substrate Unwind Stand - Std.

Part #83600.027

Substrate Unwind Stand - Plus

Part #83119.023

SHORT MANUAL TABLE

10.5" Usable Proofer Length

17.5" Stroke Length

LONG MANUAL TABLE

20" Usable Proofer Length

27" Stroke Length



MOTORIZED PROOFER TABLES

Motorized Proofer Tables are available in two different types, electric and pneumatic, and come with an unwind stand. The standard motorized table will accommodate HarperScientific's standard sized proofer and produce a print width of 2.5" (63.5 mm). The plus will produce a print width of 4.5" (114.3 mm) and adds an additional three inches to the overall width of the table, making the overall footprint 11" x 48". Proofers are sold separately.

ELECTRIC

The electric table has a variable speed from 15-450 inches/minute (381-1,143 cm/min) and has a universal powered supply that may be operated at 45 watts, 85-265 VAC, and 50/60 Hz).

Standard

Part #83005.000

Plus

Part #83006.000

PNEUMATIC

The pneumatic table has an internal regulator and flow control, which are preset at 1,000 inches/minute (2,540 cm/min) to assure smooth travel. It requires 90-100 psi (6.2-6.9 bars) of clean, dry, compressed air from a minimum of a 3/8" (10 mm) pipe/line.

Standard

Part #83005.001



Shown with Substraight Unwind Stand

MOTORIZED TABLES

19" Usable Proofer Length

26" Stroke Length

8" x 48" Standard Footprint

QD™ PROOFER HANDLES & PRINTHEADS

US PATENT# 8,783,180

Hit the ground running with a QD™ Proofer!

The QD™ Proofer (flexo or gravure) comes with a kit so you can hit the ground running! Kits include: 5 doctor blades; a rubber roll (flexo w/ handle), 2 plate cylinder bases (flexo printhead), or a rubber mat (gravure); a wash-up cleaning tray; samples of HarperScientific's most popular cleaners; allen wrenches to change parts and disassemble your proofer for proper cleaning; a cleaning brush, swabs, and lubrication for maintenance; and a storage case.



The QD™ Flexo Printhead also comes with a pair of plate cylinder bushings, cylinder storage tray, plate mounting stand, and a cleaning stand that sits over the wash-up cleaning tray.



GRAVURE

The gravure proofers are specifically designed to be used with the QD™ Proofer Tables and Printer but may also be used as a standalone handheld proofer. The Universal Gravure Proofer allows you to adjust the angle of the doctor blade. A rubber mat is included as a table cushion. Anilox rolls are sold separately.

QD™ GRAVURE

Standard

Part #83110.006

Plus

Part #83110.112

QD™ UNIVERSAL GRAVURE

Standard

Part #83110.020

Plus

Part #83110.030

FLEXO

The QD™ Flexo Proofer is specifically designed to be used with the QD™ Proofer Tables and Printer but may also be used as a standalone handheld proofer. The Phantom Proofer, however, is a standalone handheld proofer and is NOT compatible with the QD™ Proofer Tables or Printer. All of these proofers include your choice of a 45 Durometer (water-based & solvent ink) or a 55 Durometer (UV ink) rubber roll. Anilox rolls are sold separately. **** A 45 Durometer will be provided unless otherwise specified when the order is placed.****

QD™ FLEXO

Standard

Part #83110.005

Plus

Part #81100.111

PHANTOM™

Standard

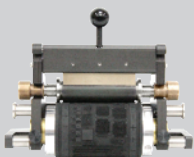
Part #81100.000



NOT Compatible With
QD™ Proofer Table or Printer

QD™ FLEXO PRINTHEAD w/ PLATE CYLINDER

The QD™ Flexo Printhead is specifically designed to be used with the QD™ Proofer Tables and Printer, NOT as a standalone proofer. Plate and anilox rolls are not included.



Standard

Part #83119.028

Plus

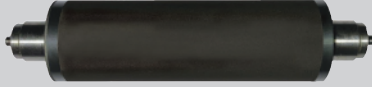
Part #83119.030

	STANDARD	PLUS
Print Width	2.5" 63.5mm	4.5" 114.3mm
Anilox Roll	1" x 2.75" 25.4mm x 69.8mm	1" x 5" 25.4mm x 127mm
Rubber Roll	.75" x 2.75" 25.4mm x 69.8mm	.75" x 5" 19mm x 127mm

QD™ PROOFER ROLLS

ANILOX ROLLS

Gravure & Direct Print Applications



Slotless Roll

Flexo Applications w/ Rubber Roll



Slotted Roll
(Default If Not Specified)

STANDARD (3")

	XLT ENGRAVING		SPECIALTY ENGRAVING	
	1 LS/VOL	2 LS/VOL (BANDED)	1 LS/VOL	2 LS/VOL (BANDED)
SLOTLESS	Part #82200.001	Part #82200.001*	Part #82200.002	Part #82200.002*
SLOTTED	Part #82100.001	Part #82100.001*	Part #82100.002	Part #82100.002*

PLUS (5")

	XLT ENGRAVING		SPECIALTY ENGRAVING	
	1 LS/VOL	2 LS/VOL (BANDED)	1 LS/VOL	2 LS/VOL (BANDED)
SLOTLESS	Part #82300.001	Part #82300.001*	Part #82300.002	Part #82300.002*
SLOTTED	Part #82111.999	Part #82111.999*	Part #82312.999	Part #82312.999*

* Additional Charge Applies.

RUBBER ROLLS

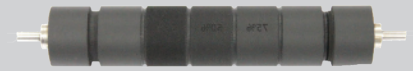
Transfer Roll



Continuous Tone Scale Roll



Tone Scale Roll



TRANSFER ROLL

	STANDARD (3")	PLUS (5")
45 DURO	Part #80119.045	Part #80121.045
55 DURO	Part #80119.055	Part #80121.055
70 DURO	Part #80121.070	Special Order Only

CONTINUOUS TONE SCALE ROLL

	STANDARD (3")
45 DURO	Part #80124.045
55 DURO	Part #80124.055
70 DURO	Part #80124.070

TONE SCALE ROLL

	STANDARD (3")	CUSTOM STANDARD (3")	CUSTOM PLUS (5")
45 DURO	Part #80122.045	Part #80123.045	Part #80123.046
55 DURO	Part #80122.055	Part #80123.055	Part #80121.056
70 DURO	Part #80122.070	Part #80123.070	

CUSTOM DESIGNS

A programming/setting-up fee applies for each new or modified design.
Part #80011.000

INK	ROLL TYPE
WATER / SOLVENT	45 DURO
UV	55 DURO

QD™ PROOFER ACCESSORIES

DOCTOR BLADES (5 PACK)

FLEXO PROOFER		STANDARD (3")	PLUS (5")
PHANTOM	9/16" Tall / .006" Thick	Part #81113.000	----
QD / QD PRINTHEAD	3/4" Tall / .008" Thick	Part #83600.001	Part #80108.005
QD (UV ink)	9/16" Tall / .008" Thick	Part #83600.024	----
	5/8" Tall / .008" Thick	Part #83600.263	Part #83600.274
GRAVURE PROOFER		STANDARD (3")	PLUS (5")
SLOTTED BASE	9/16" Tall / .008" Thick	Part #83600.024	Part #83119.015
	5/8" Tall / .008" Thick	Part #83600.263	Part #83600.274
SLOTTLESS BASE	9/16" Tall / .004" Thick	Part #83110.023	Part #83110.032
	9/16" Tall / .008" Thick	----	Part #83600.241
GRAVURE PROOFER BACK-UP BLADE		Part #83119.008	Part #83119.016

GRAVURE RUBBER MATS

	STANDARD (3")	PLUS (5")
40 A RUBBER MAT (1/8" x 4" x 36")	Part #83100.026	Part #83110.033
70A RUBBER MAT (1/16" x 4" x 24")	Part #83600.023	Part #83600.029

PROOFER STORAGE CASE

Protect your investment with this rugged, hard shell case! It'll hold your proofer, extra doctor blades, and has five proofer roll compartments!

Part #80100.701



QD™ FLEXO PROOFER PARTS LIST

BLADE TARGET w/ MAGNET
Part #83600.008
(SET OF 2)

BLADE PIN DETENT
Part #83600.007
(SET OF 2)



CAPSTAN
Part #83600.016

TARGET MOUNTING SCREW
Part #83600.009
(SET OF 2)

SIDE FRAME SCREW
Part #83600.013
(SET OF 2)

CAPSTAN SCREW
Part #83600.017
(SET OF 4)

LEFT SIDE FRAME
Part #83600.014

RIGHT SIDE FRAME
Part #83600.015

ANILOX QUICK CHANGE BRASS THIMBLE
Part #83600.010
(SET OF 2)



HANDLE/CROSS SUPPORT
STANDARD Part #83600.018
PLUS Part #83119.063

ACCESSORIES

TRANSFER RUBBER ROLL
STANDARD
PLUS

45 DURO
Part #80119.045
Part #80119.055

55 DURO
Part #80121.045
Part #80121.055

DOCTOR BLADES
STANDARD
PLUS

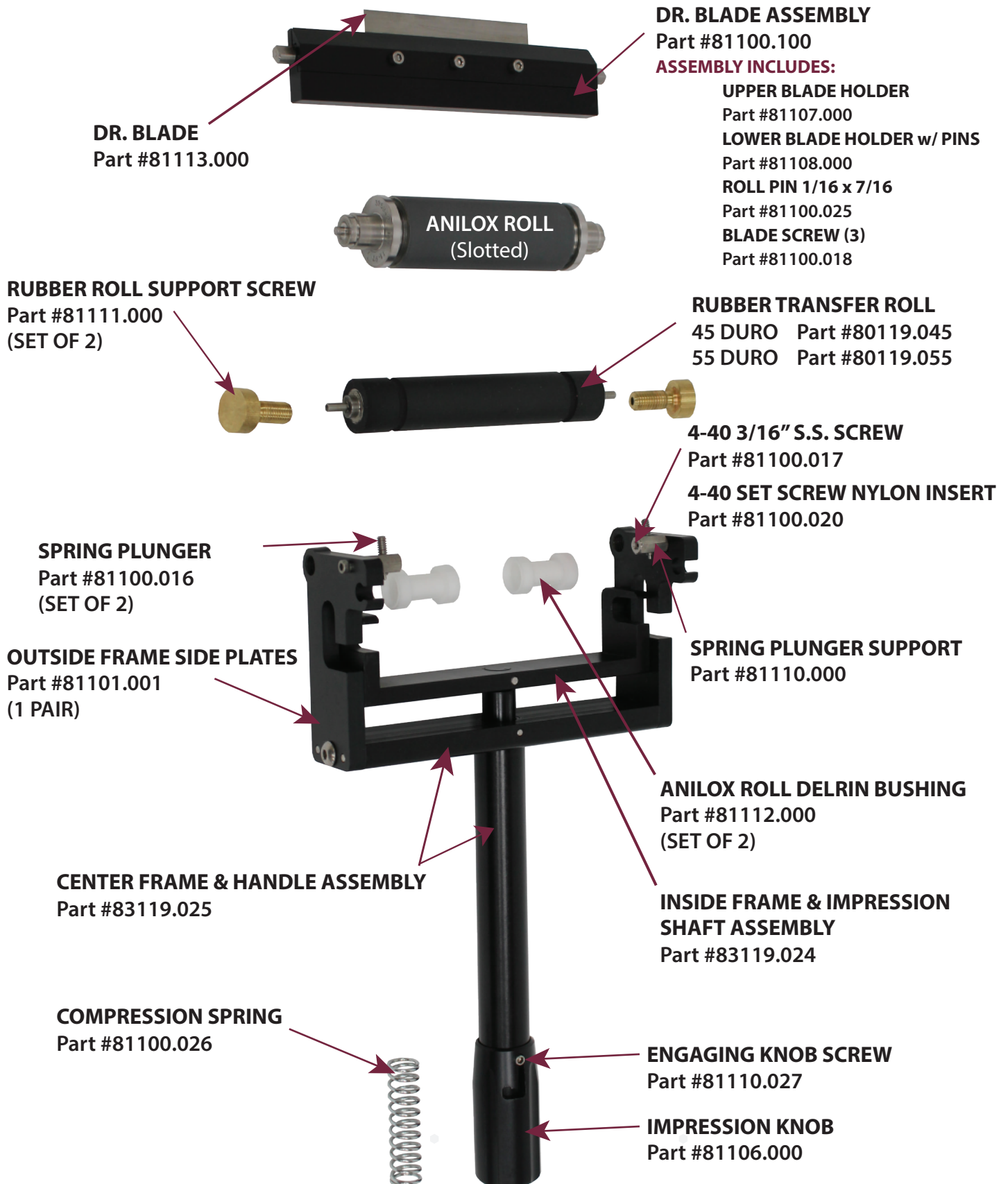
Part #83600.001
Part #80108.005

ALLEN WRENCH

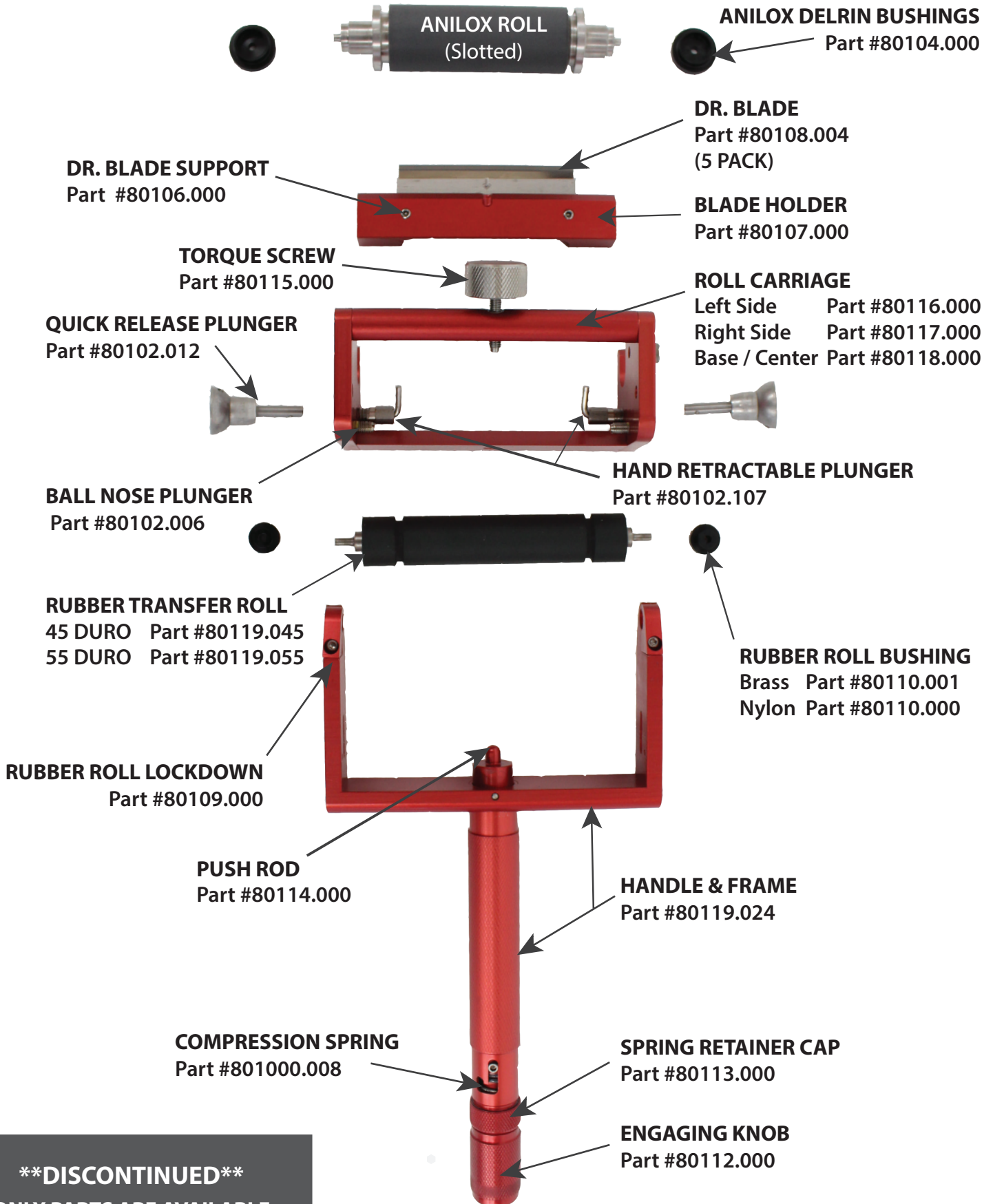
RUBBER ROLL (5/32)
Part #83600.020

BLADE (3/32)
Part #83600.019

PHANTOM™ PROOFER PARTS LIST



ECHOCEL JR.™ PROOFER PARTS LIST



****DISCONTINUED****

ONLY PARTS ARE AVAILABLE

